

# PD Series Installation Procedure

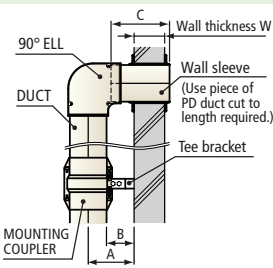
## 1. Install Pipe Clamp Brackets

Determine path of lineset and distance required from vertical wall surface. Select tee bracket size from Table 1 and install tee brackets at spacing required in Table 2, and as shown in Fig. 1.

**Table 1 Selection Data for Tee Brackets**

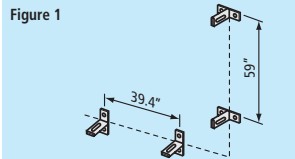
Units: inches

Tee Bracket/Pipe Clamp Combination	Center Height A	Distance from Wall B	Length of Sleeve C
O.D. 3.5" or less	2.4	4.2	2.4
	3.1	5.0	3.1
	3.9	5.75	3.9
O.D. 4.5" or less	2.4	4.7	2.4
	3.1	5.5	3.1
	3.9	6.3	3.9



**Table 2 Bracket Spacing**

Vertical Mounting	59"
Horizontal Mounting	39.4"
Underslab Mounting	39.4"

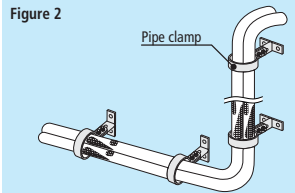


## 2. Install Lineset

Attach pipe clamps to tee brackets & install lineset inside clamps as shown in Fig. 2.

### CAUTION

Before installing any copper elbows, ensure that the elbow radius is not too small or too large to fit inside the PDE elbow. When determining elbow radius, remember to allow for thickness of insulation.

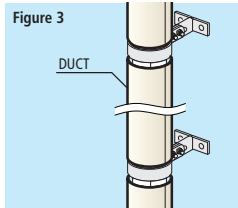


## 3. Fit Duct onto Lineset

Select PD duct size to suit pipe clamp size as shown in Table 3. Measure distance between brackets and cut PD duct to length, allowing for tolerances as shown in Tables 4 & 5. Clip each duct segment into place around lineset as shown in Fig. 3.

**Table 3 Duct Selector Table**

Pipe Clamp Size	Duct Size
O.D. 3.5" or less	PD-90
O.D. 4.5" or less	PD-120
O.D. 5.5" or less	PD-140

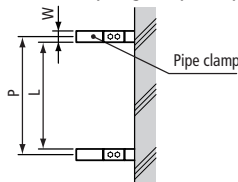


(To determine correct duct length between fittings, refer to Table 5.)

**Table 4 Duct Length Tolerances when Installing between Pipe Clamps**

Bracket Spacing P	Duct Length L	
	Pipe Clamp Width W=1"	Pipe Clamp Width W=1.25"
39.4"	37.8" to 38.4"	37.5" to 38.1"
59"	57.5" to 58.1"	57.2" to 57.8"

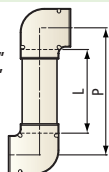
$$\text{Duct length L} = \text{Bracket spacing P} - \text{Pipe clamp width W}$$



**Table 5 Duct Length Tolerances when Installing between PD Fittings**

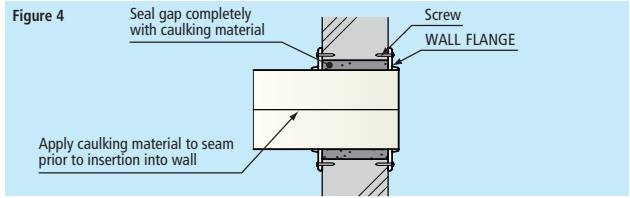
Bracket Spacing P	Duct Length L		
	Duct Size PD-90	Duct Size PD-120	Duct Size PD-140
39.4"	34.4" to 34.8"	33.1" to 33.5"	33.1" to 33.5"
59"	54.1" to 54.5"	52.8" to 53.1"	52.8" to 53.1"

Duct length L (PD-90) = Bracket spacing P - 5.0" to 4.6"  
 Duct length L (PD-120) = Bracket spacing P - 6.3" to 5.9"  
 Duct length L (PD-140) = Bracket spacing P - 6.3" to 5.9"



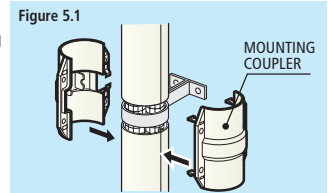
## 4. Install Wall Flanges and Sleeve

Cut wall sleeve to length required as per Table 1. Caulk longitudinal seam on sleeve and insert into wall. Completely fill the gap between outer surface of sleeve and wall with caulk or putty. Attach wall flange on both sides of wall before caulking has set, as shown in Fig. 4.



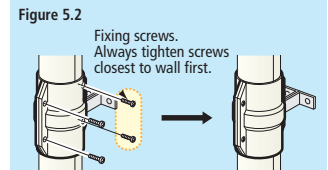
## 5. Install Mounting Coupler

(1) Line up the notched sides of the mounting coupler over the duct and pipe clamp, facing the wall, as shown in Fig 5.1 and clip it together using the integral plastic clips.



**DO NOT REMOVE THE TABS ON THE INSIDE OF THE COUPLER, THEY ARE REQUIRED TO PROVIDE A TIGHT RATTLE FREE FIT ONTO THE PIPE CLAMP.**

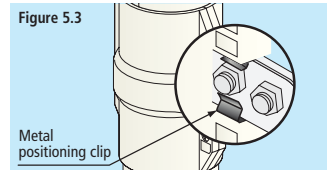
(2) Secure by tightening fixing screws (M3.5x3/4") provided, as shown in Fig. 5.2.



### CAUTION

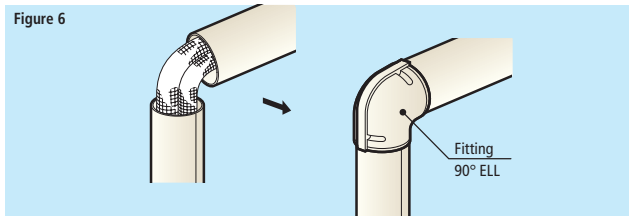
Always tighten fixing screws closest to wall first. If fixing screws on opposite side of coupler are tightened first, screws on side of coupler facing wall may be overtightened and can strip the thread on the coupler.

(3) Ensure that metal positioning clip on PDB coupler attaches on center of pipe clamp so it does not foul on the bolts which attach the clamp to the tee bracket, as shown in Fig. 5.3.



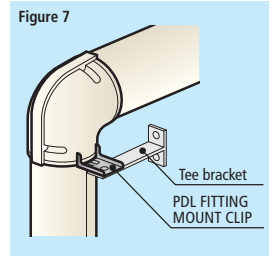
## 6. Install Fittings

Clip the fittings into place on the PD duct and secure with screws provided (M3.5x3/4") as shown in Fig. 6.



## 7. Install Fitting Mount Clip

Insert PDL Mount Clip into vertical space between duct and fitting (PDC, PDE or PDJ). Attach PDL clip to tee bracket as shown in Fig. 7. Attach tee bracket to wall surface.



**NOTE THAT ALL FITTINGS EXCEPT MOUNTING COUPLER PDB INCLUDE A SLOT ON BOTH TOP AND BOTTOM TO ACCOMMODATE THE PDL MOUNT CLIP WHICH IS DESIGNED TO PREVENT THE DUCT FROM SLIDING DOWNWARDS WHEN IT IS MOUNTED VERTICALLY.**

## 8. Weatherproofing

PD SERIES DUCTING IS NOT WATERPROOF. Caulk all lateral and longitudinal joints and all screw heads with weatherproof sealant. Pay particular attention to the penetration point into the building or condenser as insufficient sealing there may cause water leakage.

