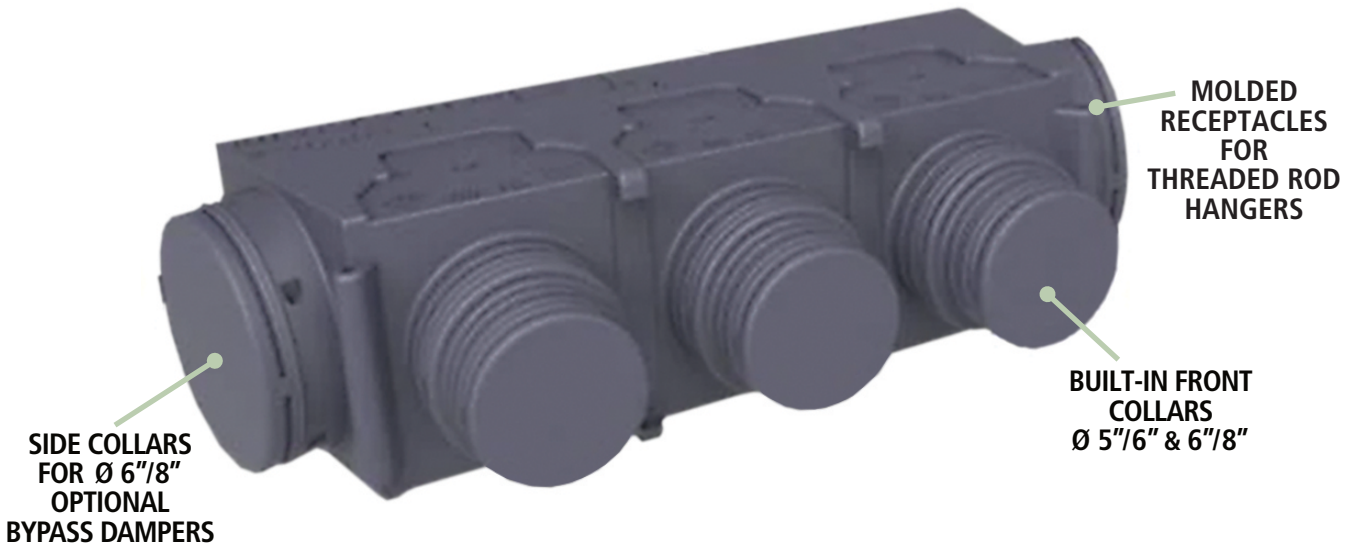


**NEW**

# **EASYPLENUM**

## **Versatile, Lightweight Prefabricated Plenum with Multiple Outlets, Suitable for All Ducted Air Handlers**

- Injection molded from light weight sintered polystyrene, No insulation required.
- Rear inlet opening adjusts easily to suit any size blower outlet on the air handler.
- Conforms to European Common Market fire resistance norms, Class E.
- 2 sizes, each with multiple outlet configurations to suit any combination of duct sizes.
- Zero leakage.
- Very low thermal conductivity plus integral vapor barrier eliminates sweating.
- Dual size front collars provide 5"/16" or 6"/8" connections for dampers, rigid duct or flexduct.
- 2 side collars, each 6"/8" provided if bypass dampers are required.
- Integral molded hanger receptacles permit easy installation with threaded rod.
- Operating temperature range: -22°F to 194°F.



### **MODELS:**



**2 OUTPUTS**



**3 OUTPUTS**



**4 OUTPUTS**



**5 OUTPUTS**

**Master Distributor for the USA & Canada:**



P.O. Box 10330, New Brunswick, NJ 08906 USA  
ph: 732-985-8226 • fax: 732-985-2134 • info@marketair.com  
[www.marketair.com](http://www.marketair.com)